



# Shriver Job Corps Center

Training Youth for In-Demand Jobs | November 2021



## Center Profile

**Director:** Angela Rackley | **Capacity:** 300 Students | **Contact:** Denise Schultz (978) 784-2600

**Staff:** 21 | **Location:** 270 Jackson Rd. | Devens, MA 01434

## Center Demographics

Job Corps students receive evidence-based social skills, academic, and technical training that leads to career and life success. Here's a breakdown of the students we serve:

### Age

- 14% 16-18 years old
- 86% 18-24 years old

### Gender

76% male | 24% female

### Race/Ethnicity

- 36% African American
- 29% Hispanic
- 23% White
- 12% Other

## Follow-up Services

Helping former students with housing, transportation, food, and other essential, basic needs for one year after graduation.

## Job Corps Resumes In-Person Enrollments

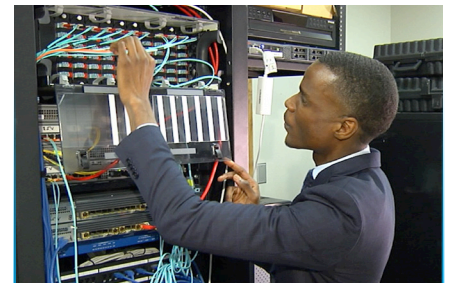
After a year and a half of suspended in-person enrollments, Job Corps campuses are starting to reopen and enroll new students. As campuses reopen, they are adhering to stringent standards to protect students and limit the impact of COVID-19.

## Student Results (Year Ending June 30, 2020)



### Good Jobs

170 students began their careers.



### High Wages

Graduates earned \$14.62 per hour, providing them with a good starting wage and the skills and certifications necessary to advance in their career.

# Job Corps Works!

## Our Valuable Community Partners

The many partnerships we have in our community are vital to our center's success. Our graduates are trained and hired by our employer partners while some students go on to higher education. And our recruitment partners have helped us to introduce new students to the Job Corps program. We couldn't be successful without their tremendous support!

### College Partners



### Recruitment Partners



## Career Technical Training Programs

Shriver is contracted to provide training to youth, ages 16-24, in the following areas:



### Automotive & Machine Repair

- Automotive: Light Repair & Maintenance

### Construction

- Carpentry
- Cement Masonry
- Painting



### Finance and Business

- Office Administration

### Healthcare

- Nurse Assistant/  
Home Health Aide

### Homeland Security

- Security

### Hospitality

- Culinary Arts



### Information Technology

- Advanced Computer System Administration
- Computer Technician A+ & Network+

### Transportation

- Advanced Transportation

## Community Support

### Center Community Relations Council

- **Representative Sheila Harrington**  
Massachusetts State
- **Representative Jennifer Benson**  
Massachusetts State
- **Representative Stephan Hay**  
Massachusetts State
- **Senator James B. Eldridge**  
Massachusetts State
- **Eladia Romero**  
Congressman James McGovern's Office
- **Mayor Stephen L. DiNatale**  
Fitchburg City
- **Vice President Lea Ann Scales**  
Mount Wachusett Community College
- **Deputy Director Michel Gerry**  
Workforce Services
- **James Fitzgerald**  
Massachusetts State Police
- **Mark Minnucci**  
Fitchburg School
- **Melissa Fetterhoff**  
Nashoba Valley Chamber of Commerce
- **Staci Johnson**  
MassHire No. Central Career Center

### Center Workforce Council

- **John Viola**  
Fitchburg Tire Company
- **Michael Keoseian**  
Devens Common
- **Marinella Serrano-McKinnie**  
Hands On Car Wash & Detailing
- **Dean Farnum**  
Gervais Ford
- **Doug Bushman**  
Fitchburg Housing Authority